



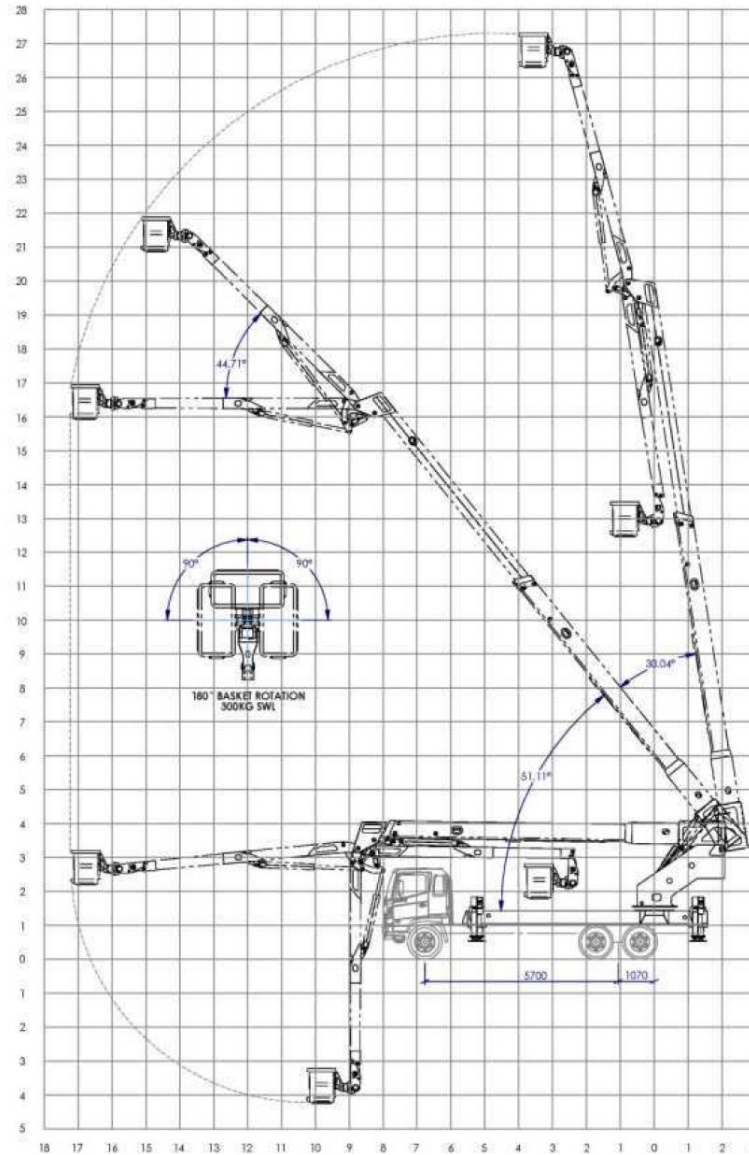
30M Tower GMJ LL28.300





30M Tower GMJ LL28.300

LL28.300 FLIGHT PATTERN





30M Tower GMJ LL28.300

Technical Data

MANUFACTURER	GMJ Equipment
EQUIPMENT MODEL	GMJ LL28.300
TRUCK LONG	12 M
TRUCK WIDTH	2.4 M
TRUCK HEIGHT	3.8 M
TRUCK WEIGHT	24,500 KG
BUCKET SWL	350 KG
RATED CAPACITY. MAX	300 KG
	245 KG when fitted with an insulating liner
OUTREACH	- AT MAX WORKING HEIGHT 4 M - MAX HORIZONTAL REACH 17.0 M
MAX FLOOR HEIGHT	24.3 M
MASS OF UNIT INCLUDING BASIC TRAY BODY	12660 KG
HYDRAULIC SYSTEM OPERATING PRESSURE	17.5 MPa
PILOT PRESSURE	3.5 MPa
MAX OPERATING WIND SPEED	12.5 M/S (45kph)
CHASSIS SLOPE	0 ± 5 DEGREES
MINIMUM STABILISER SPREAD	4.4M
MAX STABILISER BEARING LOAD PER PAD	120KN (12 tonne)
STOWED DIMENSIONS: (On typical vehicle)	- LENGTH 11.0 M - OVERALL WIDTH 2.44 M - TRAVELLING HEIGHT 4.0 M
MINIMUM VEHICLE TARE MASS (EXCLUDING EWP)	7700 KG
FRONT AXLE REMAINING CAPACITY (GROSS - TARE)	2000 KG
BASKET DIMENSIONS	1.5x.72M MAX